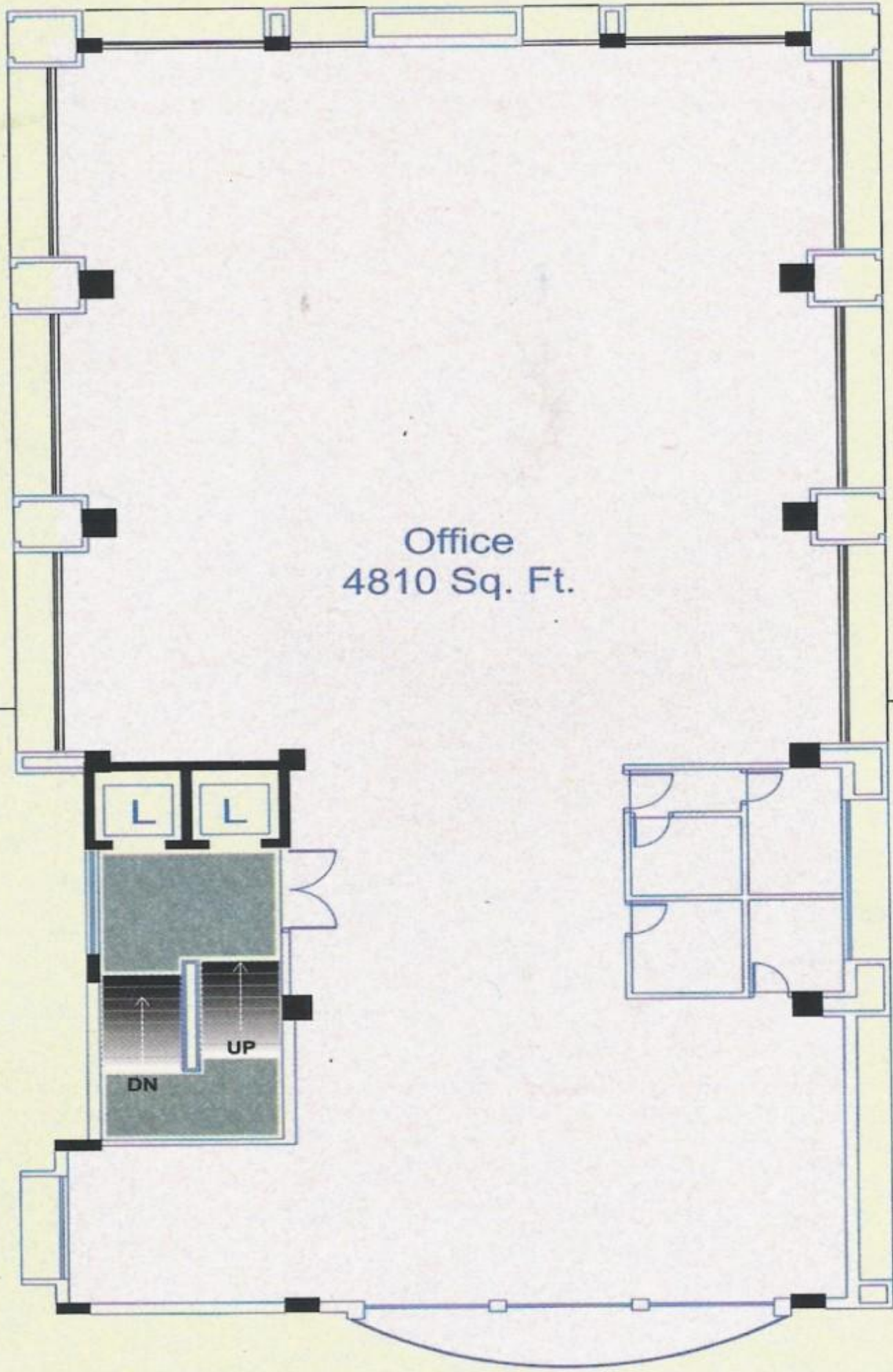


VISION HOUSE...

A "Luxury" Corporate Unit

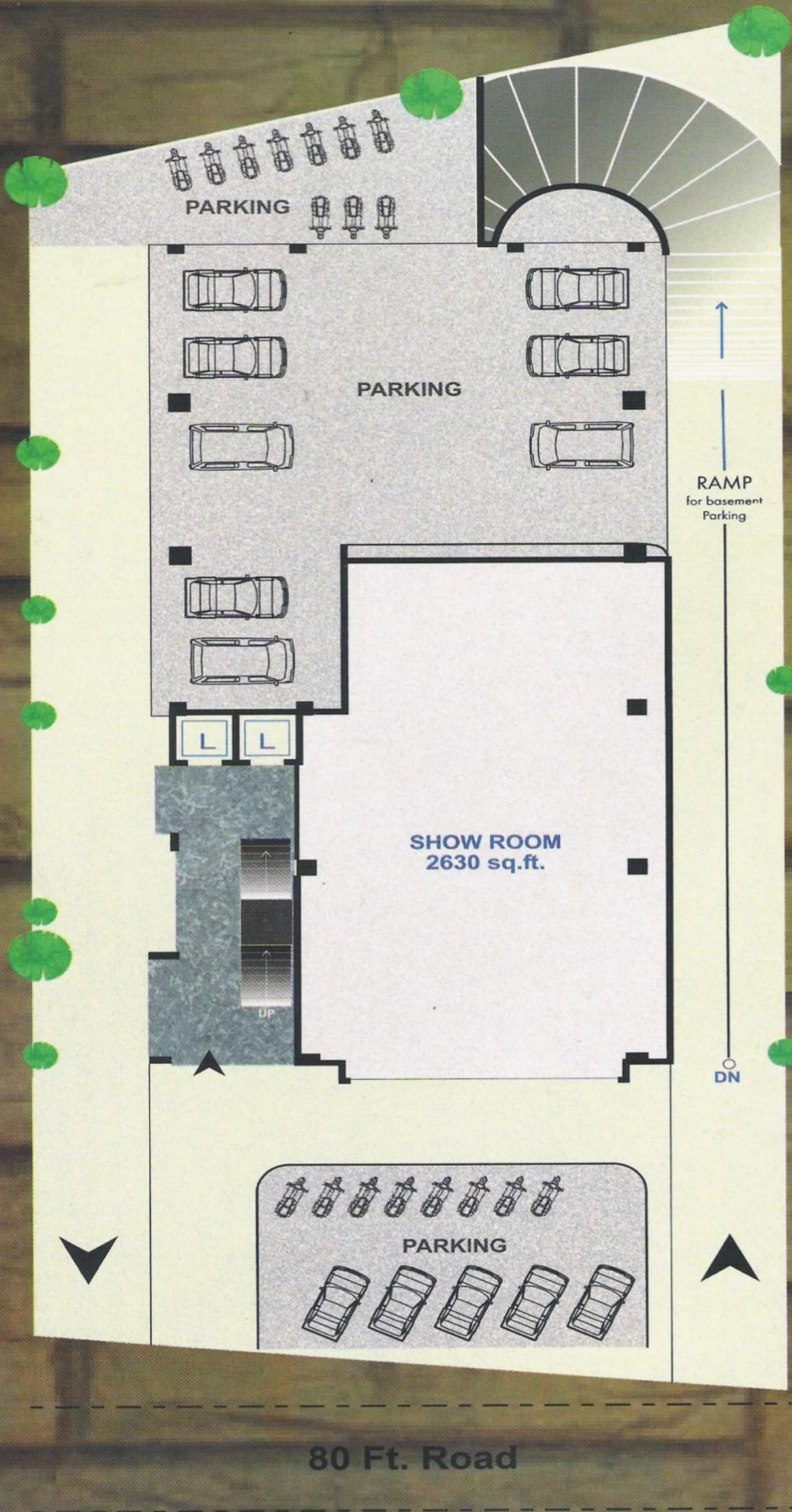


TYPICAL FLOOR PLAN



Office
4810 Sq. Ft.

GROUND FLOOR PLAN



Total Sq. Ft. Area:

Ground Floor	: 2630 Sq. Ft.
Typical Floor	: 4810 Sq. Ft.
Ground Floor - Parking	: 2180 Sq. Ft.
Basement Parking	: 4810 Sq. Ft.

SALIENT FEATURES:

- Earthquake resistant structural design.
- Ample parking space on ground floor as well as entire basement.
- 24 hour water supply with common bore well and pressure pump system facilities.
- Two Lifts 6 person capacity.
- WI - FI Enabled.

SPECIFICATIONS:

1. **Structure** : R.C.C. Frame Structure.
2. **Wall Finish** : Internal smooth finished plaster and external double coat sand faced plaster with paint.
3. **Flooring** : Ceramic tiles flooring.
4. **Specific Notes**:
 - Maintenance deposits, Stamp duty, Legal & A. E. C. Charges shall be charged extra.
 - Sign-boards should be displayed only at specified places.
 - No external changes in elevation or any other kind shall be allowed.
 - The Developers reserves the rights to change or revise or make modifications, additions, omissions, alterations in the scheme as a whole or any part thereof or any other details.

INTRODUCTION

श्री AMI INFRASTRUCTURE

is a new generation venture of **SHRI AMI CORPORATION**, the foundation pillar of the Construction and developer Industry in Ahmedabad city. Founded by **Shri Narendrabhai M Patel** in the year 1960, today stands as one of the most reputed and recognized business house in its field.

Since the days of inception **Shri Ami Corporation** has been constantly putting inputs in developing the city by giving the city its first high rise building and has developed all types of construction projects ranging from tenaments, row houses, twin bungalows, apartments to commercial and high rise buildings. Till date **Shri Ami Corporation** has finished more than 75 plus projects and is known for pioneering in the construction of apartments. Thus today with our rich experience and versatile projects that have been undertaken till date, we stand apart from all and on top of the peak.

Today **Shree Ami Corporation** is coming back with a bang after a break of 10 years with its new version **श्री AMI INFRASTRUCTURE**, backed by the new generation and a totally new approach and a refined "VISION".

"VISION HOUSE" the upcoming project will again be making a statement as per the reputation that the firm has earned in the past. It is defined as a '**Luxurious Corporate Unit**' a distinct project with facilities and amenities that would surely give the unlikely tag '**Luxury**' to a Corporate House.

Hard to believe but we at **श्री AMI INFRASTRUCTURE** believe that each step forward has something to prove and with our new vision and the rich experience it is not too hard for us to make people believe.

श्री AMI INFRASTRUCTURE is coming up with three more projects consisting of one more commercial project and two residential properties of more than 100 apartments each at posh locations in the coming months.



KEY PLAN



Location

"VISION HOUSE"

Nr. Havmour Restaurant,
Nr. Navrangppura Bus Stand,
Navrangpura, Ahmedabad - 380 009.

Developer

श्री AMI INFRASTRUCTURE

S - 11, Vikram Chambers, Ashram Road, Ahmedabad - 380 009.

22, New Cloth Market, Raipur, Ahmedabad - 380 001.

Architect

Vikram Pandya & Associates
Ph.: 079-26420848.

Structure

Bhumi Consultant
Ph.: 079-26921664.