



V A I B H A V

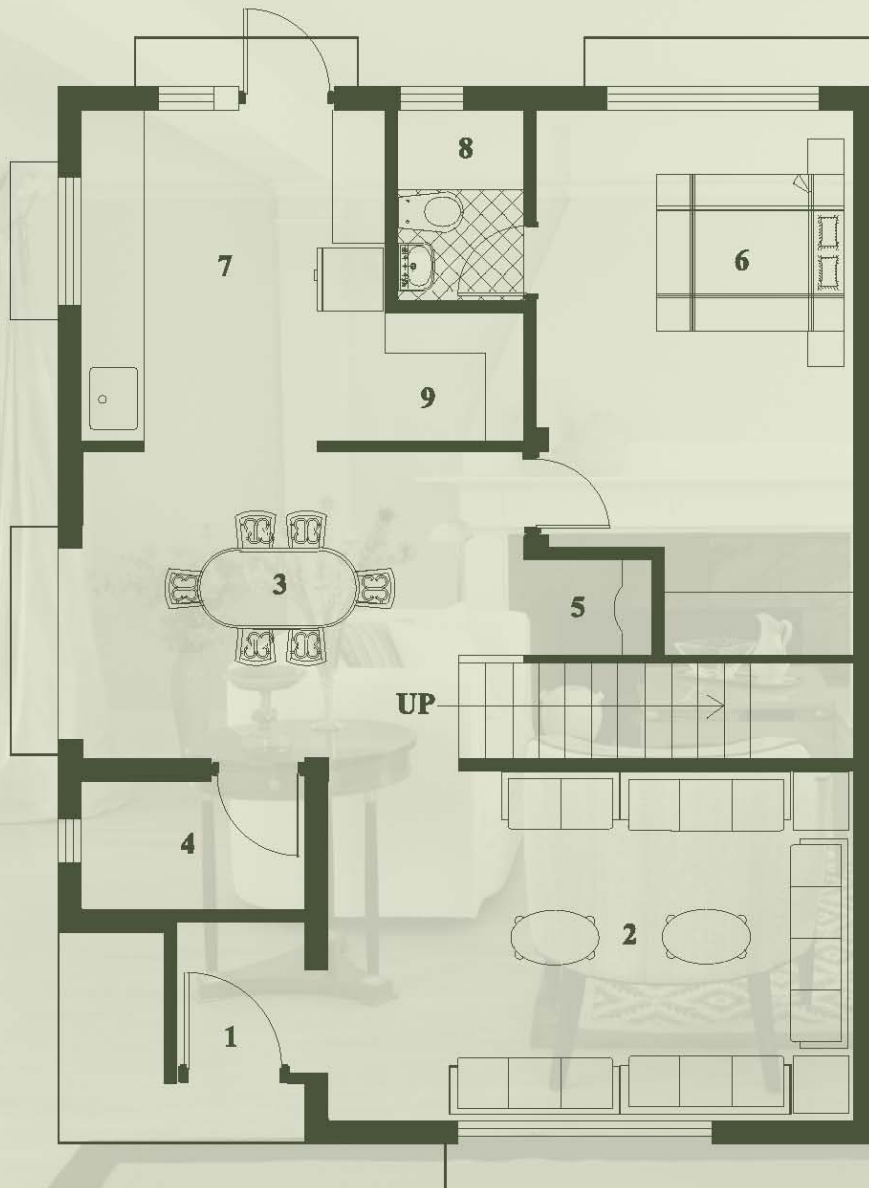


Homes



श्री AMI INFRASTRUCTURE

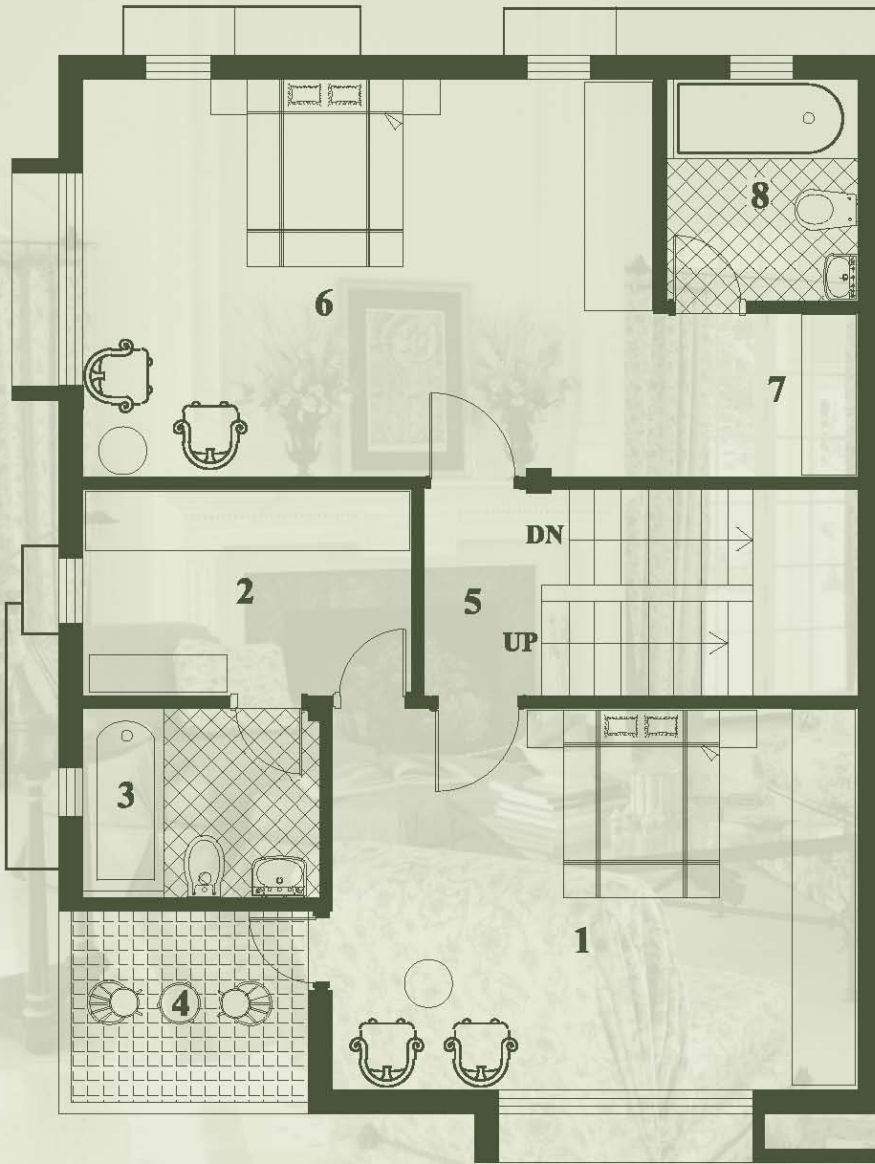
3 BHK



NO	NAME	SIZE
1	WAITING	4'-0"X4'-9"
2	DRG ROOM	16'-6"X11'-0"
3	DINING	11'-10"X9'-7"
4	STORE	7'-0"X4'-0"
5	PUJA	4'-0"X3'-0"
6	BED ROOM	10'-0"X13'-9"
7	KITCHEN	9'-6"X10'-4"
8	TOILET	4'-0"X6'-0"
9	STORE	4'-4"X4'-0"

Ground Floor Plan

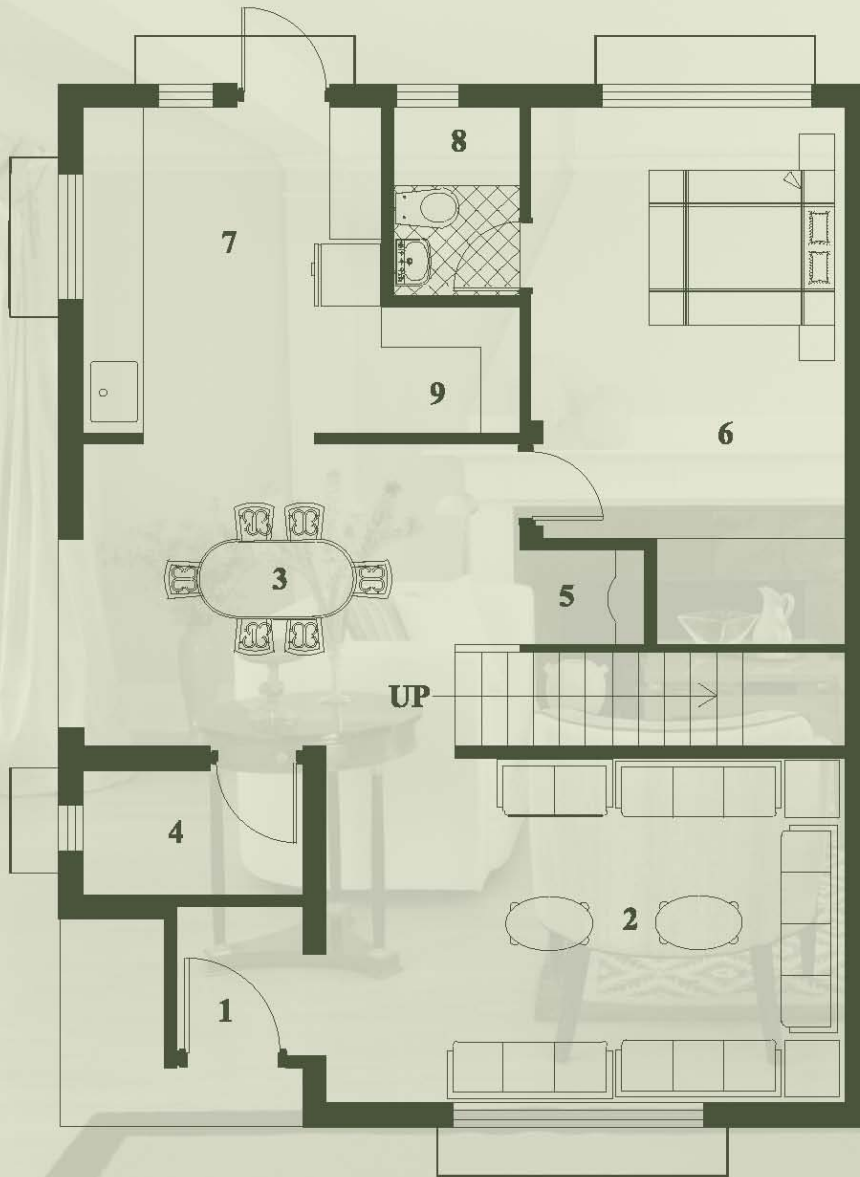
3 BHK



NO	NAME	SIZE
1	BED ROOM	16'-6"X12'-0"
2	DRESSING	10'-4"X6'-6"
3	TOILET	7'-5"X6'-0"
4	BALCONY	7'-4"X6'-0"
5	LOUNG	4'-6"X6'-5"
6	BED ROOM	18'-0"X12'-6"
7	DRESSING	6'-4"X5'-2"
8	TOILET	6'-0"X7'-0"

First Floor Plan

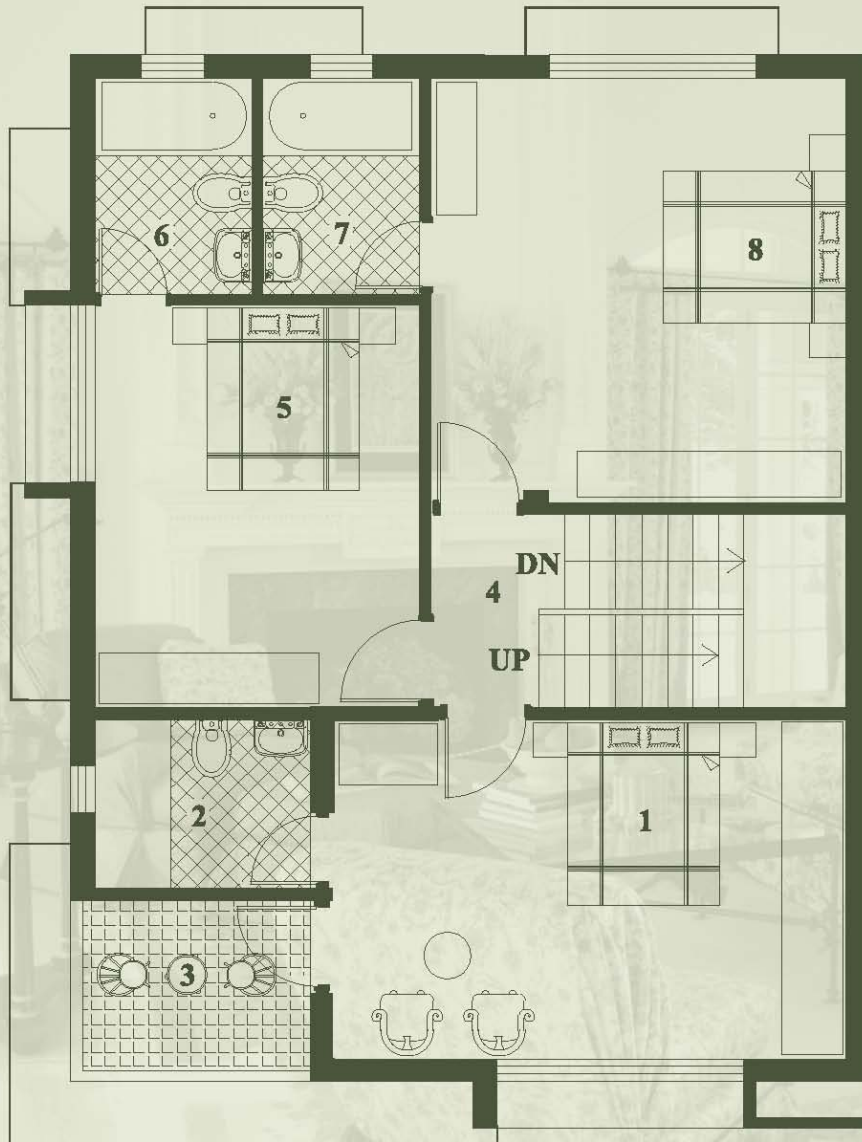
4 BHK



NO	NAME	SIZE
1	WAITING	4'-0"X4'-9"
2	DRG ROOM	16'-6"X11'-0"
3	DINING	11'-10"X9'-7"
4	STORE	7'-0"X4'-0"
5	PUJA	4'-0"X3'-0"
6	BED ROOM	10'-0"X13'-9"
7	KITCHEN	9'-6"X10'-4"
8	TOILET	4'-0"X6'-0"
9	STORE	4'-4"X4'-0"

Ground Floor Plan

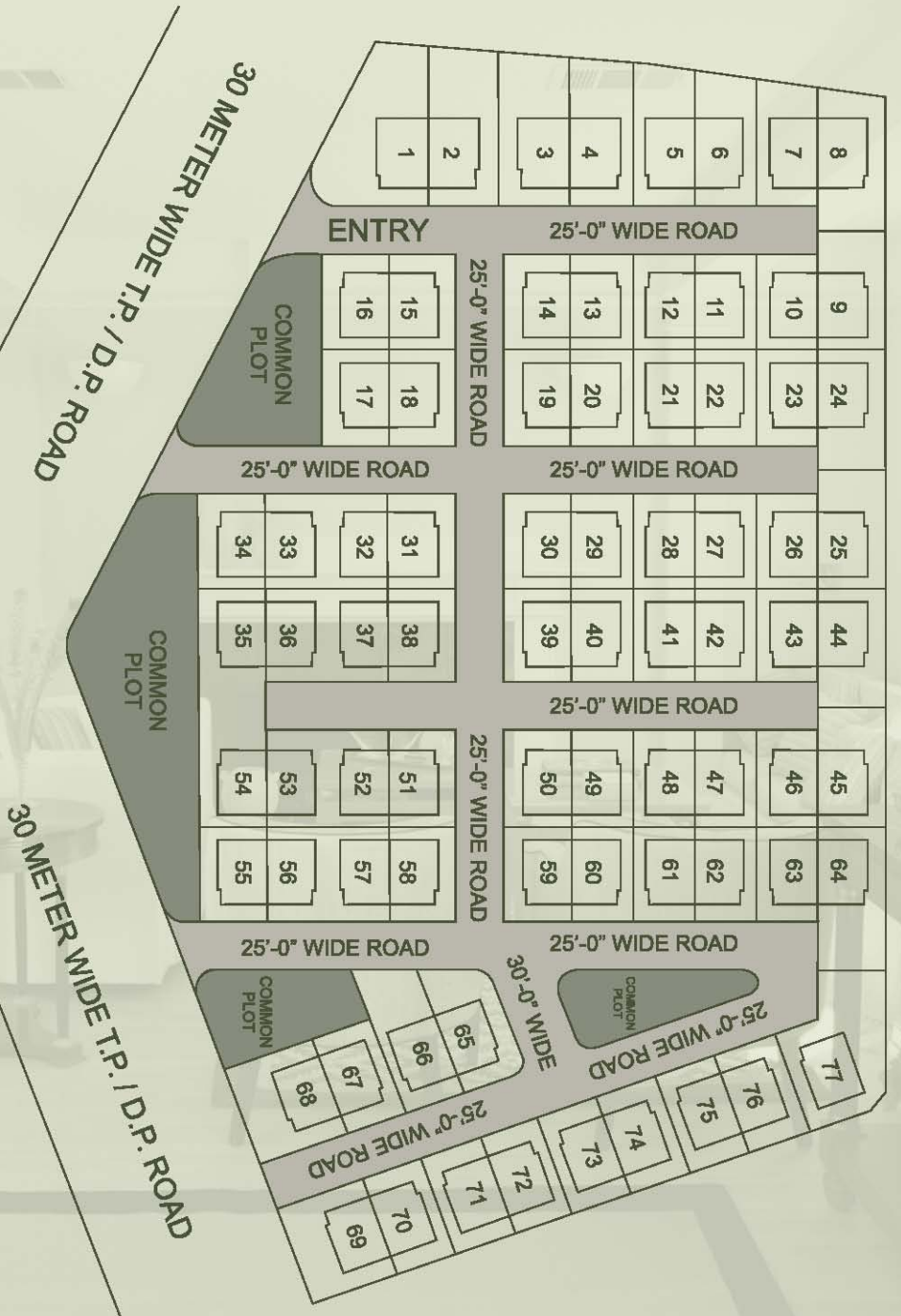
4 BHK



NO	NAME	SIZE
1	BED ROOM	16'-6"X11'-0"
2	TOILET	7'-0"X5'-6"
3	BALCONY	7'-4"X5'-6"
4	LOUNG	3'-6"X6'-3"
5	BED ROOM	10'-6"X13'-0"
6	TOILET	5'-0"X7'-0"
7	TOILET	5'-0"X7'-0"
8	BED ROOM	13'-4"X13'-9"

First Floor Plan

Plot Location



Features

- Secured & Gated Community
- Intercom facility
- Multiple gates for easy access
- Multiple landscape gardens
- Club house with indoor sports facility
- Designated children play area
- Shower Panel/Bathtub in master bed
- Video security system in each home
- Reverse Osmosis drinking water purification system



Specifications

Structure:

Load Bearing frame structure with brick partition.

Wall:

Internal smooth finish plaster with Lapi Astar.

External sandfaced plaster with Acrylic paint.

Flooring:

Ceramic/Vitrified tiles flooring.

Kitchen:

Granite platform with S.S.Sink,

Glazed tile dado upto lintel level.

Toilet:

Glazed tiles up to 7'-00" level and sanitary ware with CP fittings.

Doors:

Decorative Main Door with wooden frame, All other flush doors.

Windows:

Aluminium/Wooden fully glazed windows.

Electrification:

Three phase connection with adequate concealed electric points.

Specific Notes:

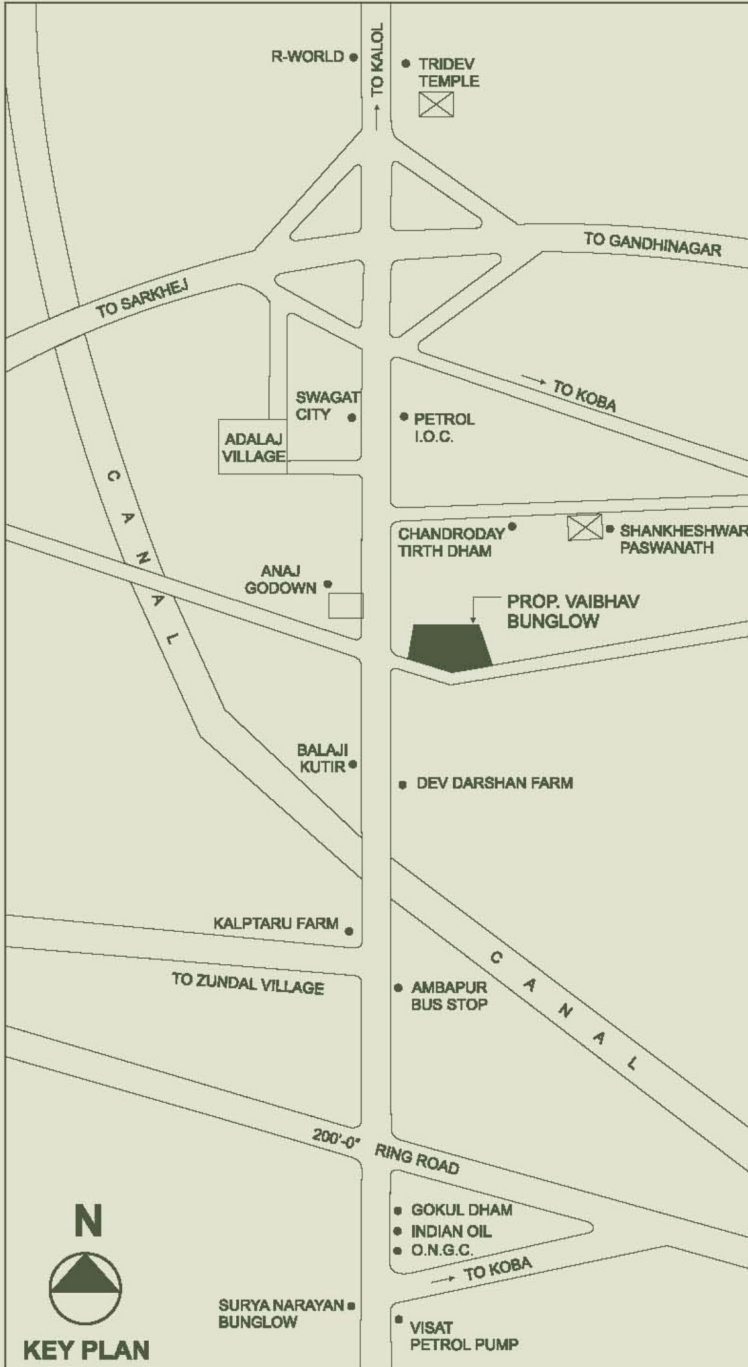
All rights reserved with the Developers to make any changes in the Scheme and all the members shall abide by such changes.

Stamp Duty, Registration Charges, Service Tax, VAT, GEB, GUDA, Legal, Maintenance charges shall be borne by the members.

Any additional charges or duties levied by the Government or Local Authorities during or after the completion of the scheme shall be Borne by the member.

This brochure is not to be treated as part of the document and is for an easy display of the project only.

Features / Facilities



www.shreeamiinfra.com



श्री AMI INFRASTRUCTURE

Shree Ami Infrastructure
 8th Floor, Rajvi Arcade.Opp. Gurukul Mandir,
 Drive In Road, Memnagar, Ahmedabad -380 053. Gujarat.

Ph : +91 79 65433997, 64501530
 e-mail: sales@shreeamiinfra.com